

Fire-Rated Narrow Profile Steel Doors & Frames

Fire Rating: 20/45/60/90 Minutes (180 Minutes*)

Fireframes® Designer Series doors and frames incorporate precise engineering to provide a sleek, modern alternative to traditional steel hollow metal frames with glass sizes surpassing traditional systems.

FEATURES

- Fire ratings of 20-90 minutes (45-90 minutes with required hose stream test) (180 minutes*)
- Easy installation similar to typical storefront systems
- Narrow steel profiles
- Full-lite doors available in single leaf or double leaf design
- Durable welded steel construction of doors
- Modular system that can incorporate 20/45/60/90 minute Fireframes Designer Series doors
- Can be used with wired glass, Fireglass®, or the FireLite® family of products
- Available as a temperature rise door for 60-90 minute applications
- Frames supplied welded or "K-D" (knock-down) ready for installation
- Door hardware available to fit functional requirements. Please check with TGP for compatibility
- Finish powder coating at the factory to match desired color scheme
- Arched profiles
- Brushed stainless steel finish available for fire ratings up to 45 minutes



BIM 3D Model Available



UL Classified & Labeled



Intertek Listed & Labeled



Fire-Rated



Hose Stream Tested



Positive Pressure Tested



Stainless Steel Option

Notes:

This product is not intended for use in locations requiring a barrier to radiant heat, as it does not meet test standards ASTM E119 or UL 263. If your jurisdiction requires "barrier to heat" framing, please contact Technical Glass Products regarding Fireframes products that meet the barrier to heat requirement.

LISTINGS/STANDARDS

Classified and labeled by Underwriters Laboratories Inc.® and Underwriters Laboratories of Canada. File numbers R25229 (windows) and R19207 (doors). Tests performed in accordance with:

UL 9	NFPA 80	CAN/ULC-S104
UL 10B	NFPA 252	CAN/ULC-S106
UL 10C	NFPA 257	

*For Warnock Hersey | Intertek listed products, tested to BS 476 Part 22 (1987), EN 1364-1 (2015), BS 476 Part 20 (1987), EN1634-1:2014+A1(2018), see spec ID 50721 and/or certificate number WHI19-33395001 for specific sizes and limitations.

FRAMING

DOORS

RATING	MAX. EXPOSED GLASS AREA PER PIECE	MAX. EXPOSED GLASS DIMENSION	RATING	MAX. SINGLE DOOR LEAF SIZE	MAX. EXPOSED GLASS SIZE PER PIECE
20 min.	6,272 in ² (4.05 m ²)	106-1/2" (2.71 m)	20 min.	43" x 95-7/8" (1.09 m x 2.44 m)	35-7/8 x 88-3/4" (.91 m x 2.25 m)
45 min.	4,500 in ² (2.90 m ²)	95-1/4" (2.42 m)	45 min.	43" x 95-7/8" (1.09 m x 2.44 m)	35-7/8 x 88-3/4" (.91 m x 2.25 m)
60 min.	5,616 in ² (3.62 m ²)	96" (2.44 m)	60 min.	43" x 95-7/8" (1.09 m x 2.44 m)	35-7/8 x 88-3/4" (.91 m x 2.25 m)
90 min.	2,627 in ² (1.69 m ²)	56-1/2" (1.44 m)	90 min.	43" x 95-7/8" (1.09 m x 2.44 m)	36" x 56-1/2" (divided lite door) (.91 m x 1.44 m)

Note: Individual lite sizes cannot exceed "Max. Exposed Area" shown above.

TEMPERATURE RISE DOORS WITH FIREGLASS®

RATING	MAX. SINGLE DOOR LEAF SIZE	MAX. EXPOSED GLASS SIZE PER PIECE
60 min.	43" x 95-7/8" (1.09 m x 2.44 m)	35-7/8" x 88-3/4" (.91 m x 2.25 m)
90 min.	43" x 95-7/8" (1.09 m x 2.44 m)	35-7/8" x 88-3/4" (.91 m x 2.25 m)

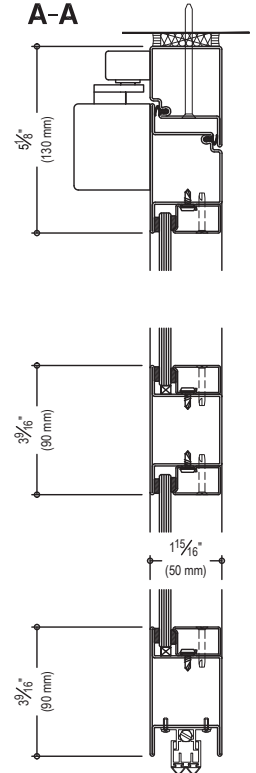
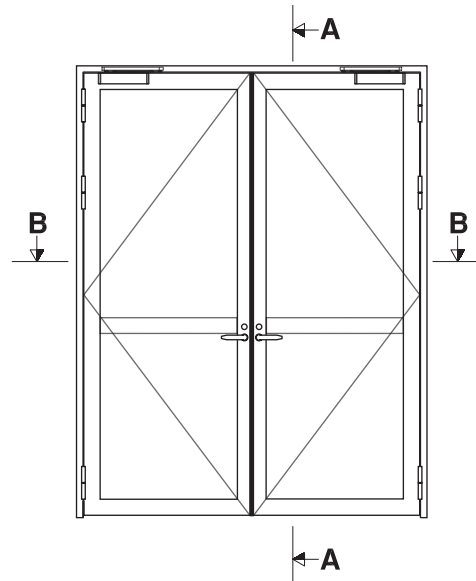
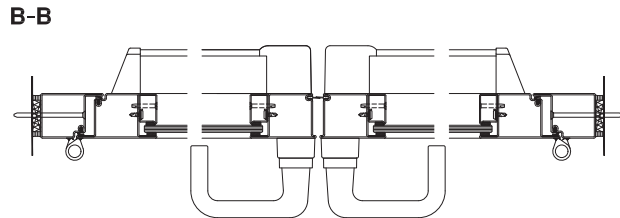
Note: Individual lite sizes cannot exceed "Max. Exposed Glass Area" shown above.

DOOR DETAILS

All door hardware for Fireframes Designer Series doors is supplied by Technical Glass Products. Please contact TGP regarding your individual hardware requirements.

Standard hardware may include:

- Hinges
- Surface mounted or concealed closers
- Single mortise lock
- Panic hardware
- Tall bottom rails



WINDOW DETAILS

